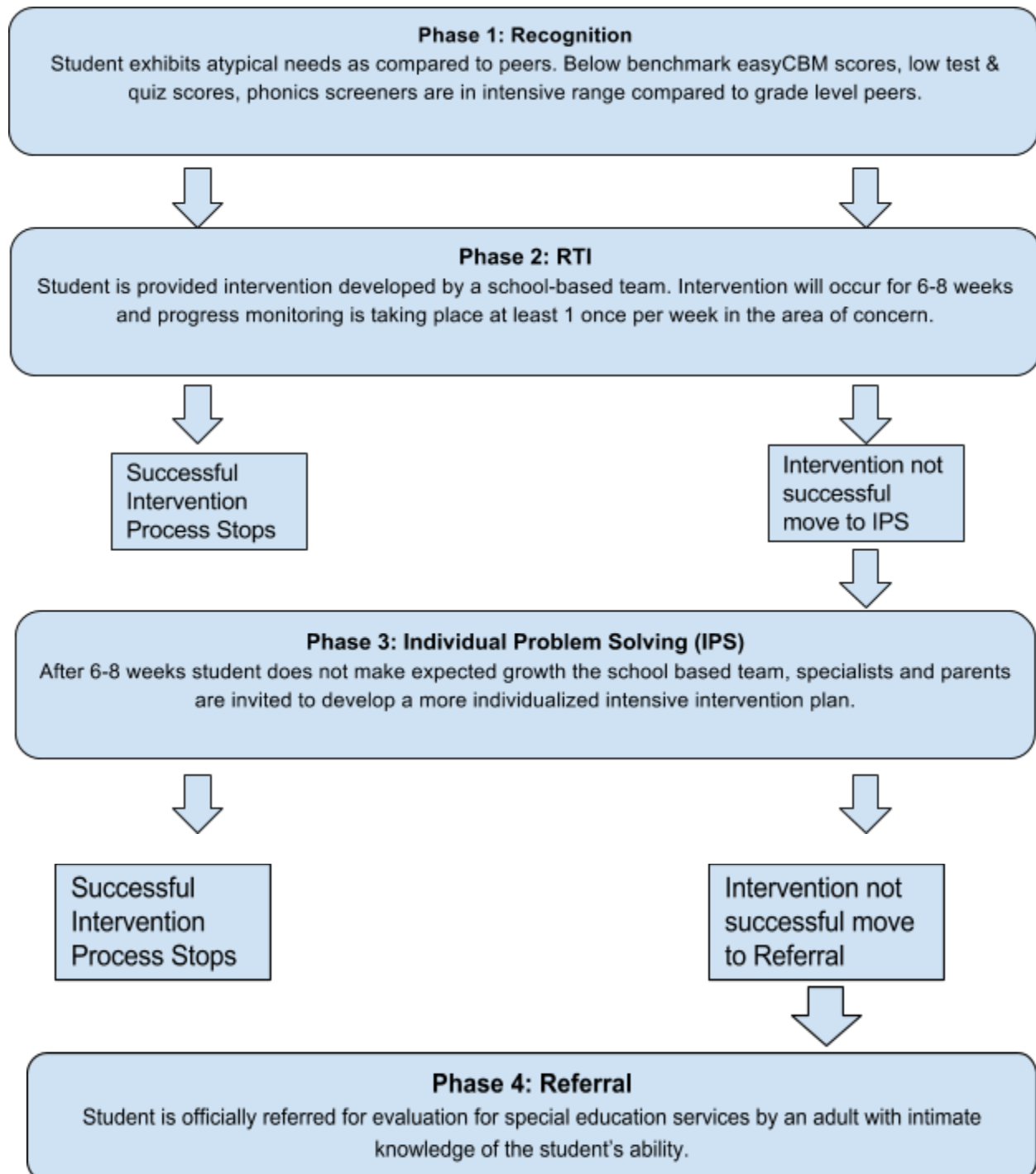


## Harney ESD Special Education

This flowchart illustrates the IEP referral process. Start at the top and follow the arrows downward to guide you through the different phases in the process from when it is recognized that a student may need additional assistance and continue through all the possible steps. It should be noted that there are areas on the flow chart where the process can halt depending on the student's needs.



### Phase 5: Evaluation

With consent of the parents, the student is evaluated with a variety of assessment tools and strategies. The assessments must not discriminate and should provide information to help determine the unique needs of the student.



### Phase 6: Eligibility

IEP team determines if the student is eligible for special education services. The student must have a disability that negatively impacts his/her educational performance and the child needs specially designed instruction in order to benefit from education.



No disability is noted that impacts educational performance. Special education not required. Process stops. Student can be referred for interventions again.



Determination that a disability impacts educational performance and eligibility is completed for special education services.



### Phase 7: IEP Process (IEP and LRE)

A multi-disciplinary team of parents, general and special education teachers, district representative, and others meet to develop the **Individualized Education Program (IEP)**. This document guides the special education program that will be provided for the student. The IEP team must also determine the **least restrictive environment (LRE)** and provide justification in the IEP for more restrictive placements.



### Phase 8: IEP Implementation (FAPE)

The entire IEP team has the responsibility to ensure that the IEP is implemented.



### Phase 9: Annual IEP

Each year, the IEP team is required to meet for the dual purpose of evaluating the implementation of the current IEP and to develop the next annual IEP. Eligibility must be reestablished every three years